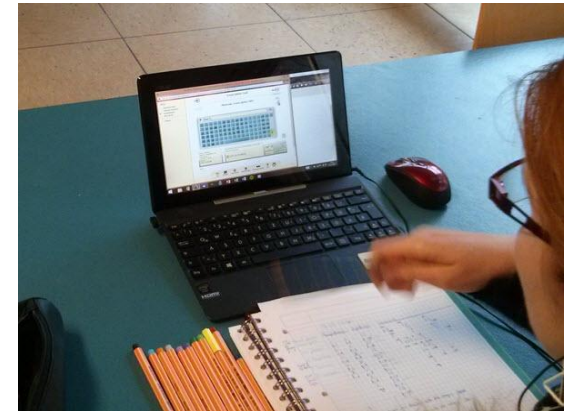


GMW 15

Gesellschaft für Medien
in der Wissenschaft e. V.



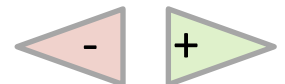
Shift Learning Activities

vom Inverted Classroom Mastery Model zum xMOOC

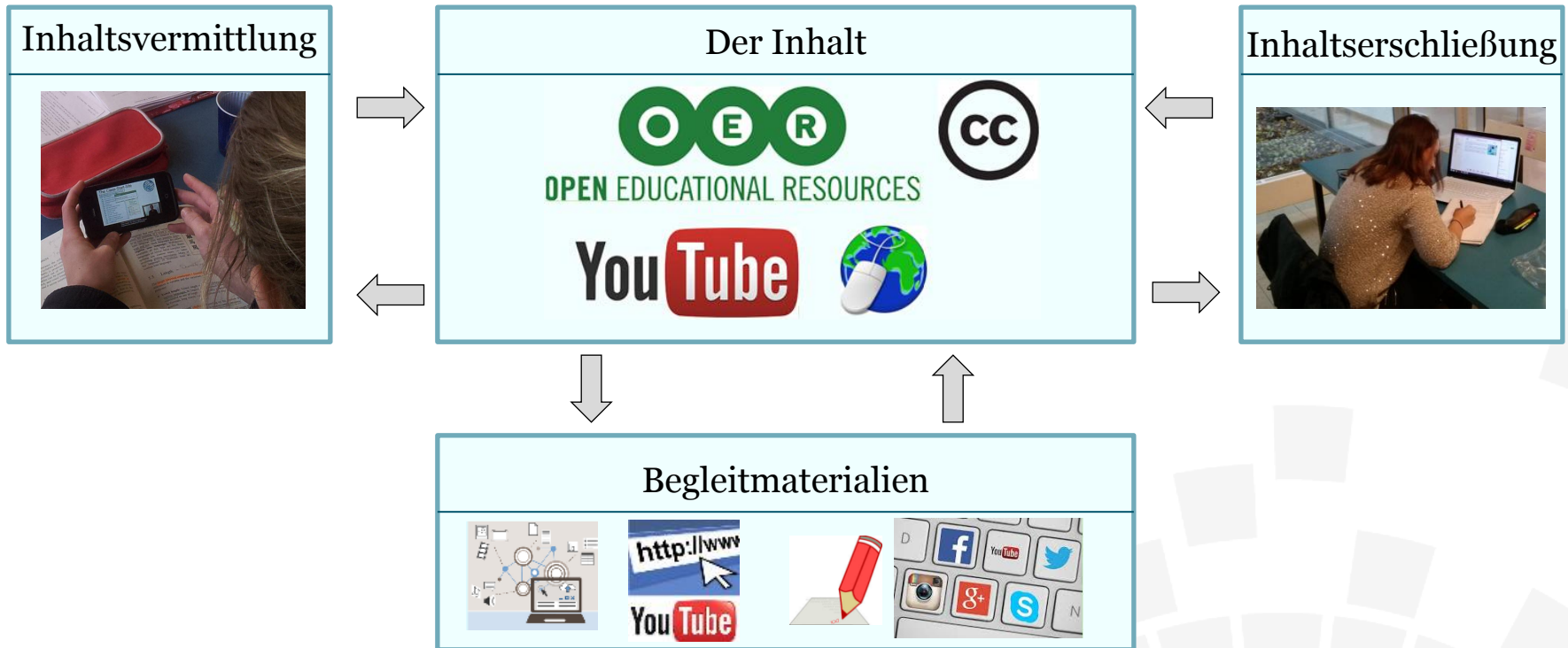
4. Sept. 2015, München, J. Handke

Shift Learning Activities

1. *Digitalisierung*
2. *Shift Activities*
(von der klassischen zur digitalen Lehre)
3. *Mehrwerte*
4. *Die Präsenzphase*



Die digitalisierte Lerneinheit

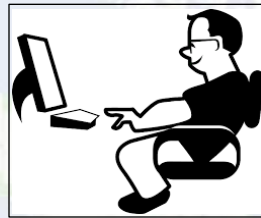


Shift Learning Activities

1. *Digitalisierung*
2. *Shift Activities*
(von der klassischen zur digitalen Lehre)
3. *Mehrwerte*
4. *Die Präsenzphase*



Lehre – digitalisiert (Inverted Classroom + **Mastery**)



Canada

Diagnostic Tests



Inhalte
• vermitteln
• erschließen



Mastery Worksheet



Hörsaal



Material zum
• Vertiefen
• Üben, etc.



> 2015

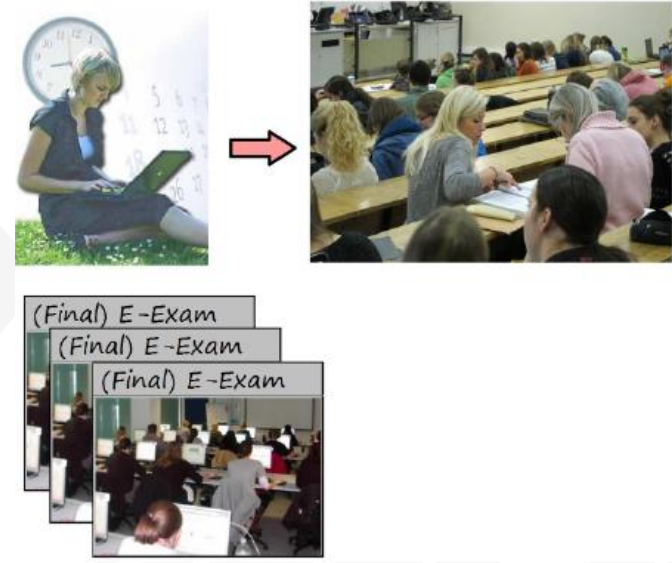
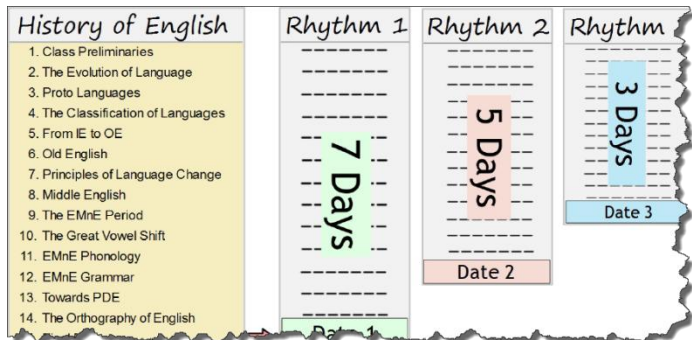
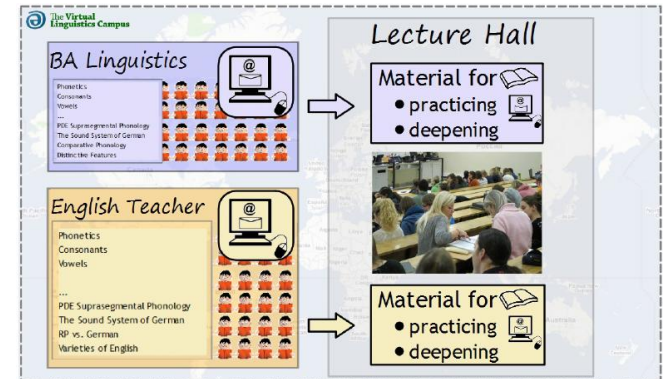
„Smart Working“

Zeit

Lösungen durch Digitalisierung

Mögliche Kursformate ...

- 2-in-1
- FLOCK
- Online-Kurs
- MOOC



Shift Learning Activities

1. *Digitalisierung*
2. *Shift Activities*
(von der klassischen zur digitalen Lehre)
3. *Mehrwerte*
4. *Die Präsenzphase*



Mehrwerte

Problemlösungen



Studierbarkeit



Der Inhalt



Die Alltagswirklichkeit



Die Präsenzlehre



Mehrwerte – für wen ?



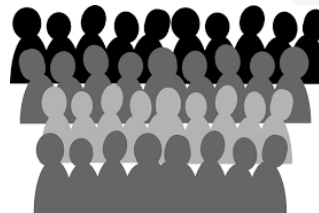
Lehrende



Hochschulen



Studierende



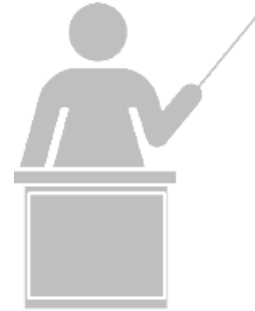
Politik

Shift Learning Activities

1. *Digitalisierung*
2. *Shift Activities*
(von der klassischen zur digitalen Lehre)
3. *Mehrwerte*
4. *Die Präsenzphase*



Mehr- und Minderwert für Lehrende



- höhere Lehrzufriedenheit
- (inter)aktivere Präsenzphase
- ständiges Feedback
- direkter Kontakt zu den Lernenden
- mehr Zeit

- physikalische Anforderungen
- hoher (Betreuungs)aufwand
- Kontrollverlust
- ‚breitere‘ Inhalte‘
- intensive Planung

Mehr- und Minderwert für Studierende



Introduction to Linguistics

- WS 13/14
- n = 232 *Inverted Classroom*

Morphology & Syntax

- SS 14 *Inverted Classroom*
- n = 192 *Traditionell*

History of English

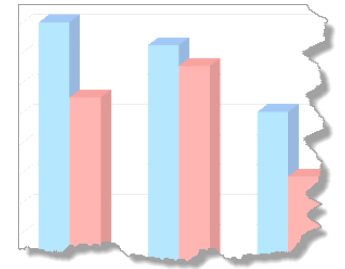
- WS 14/15
- n = 175 *Inverted Classroom*

> Präsenzzeit

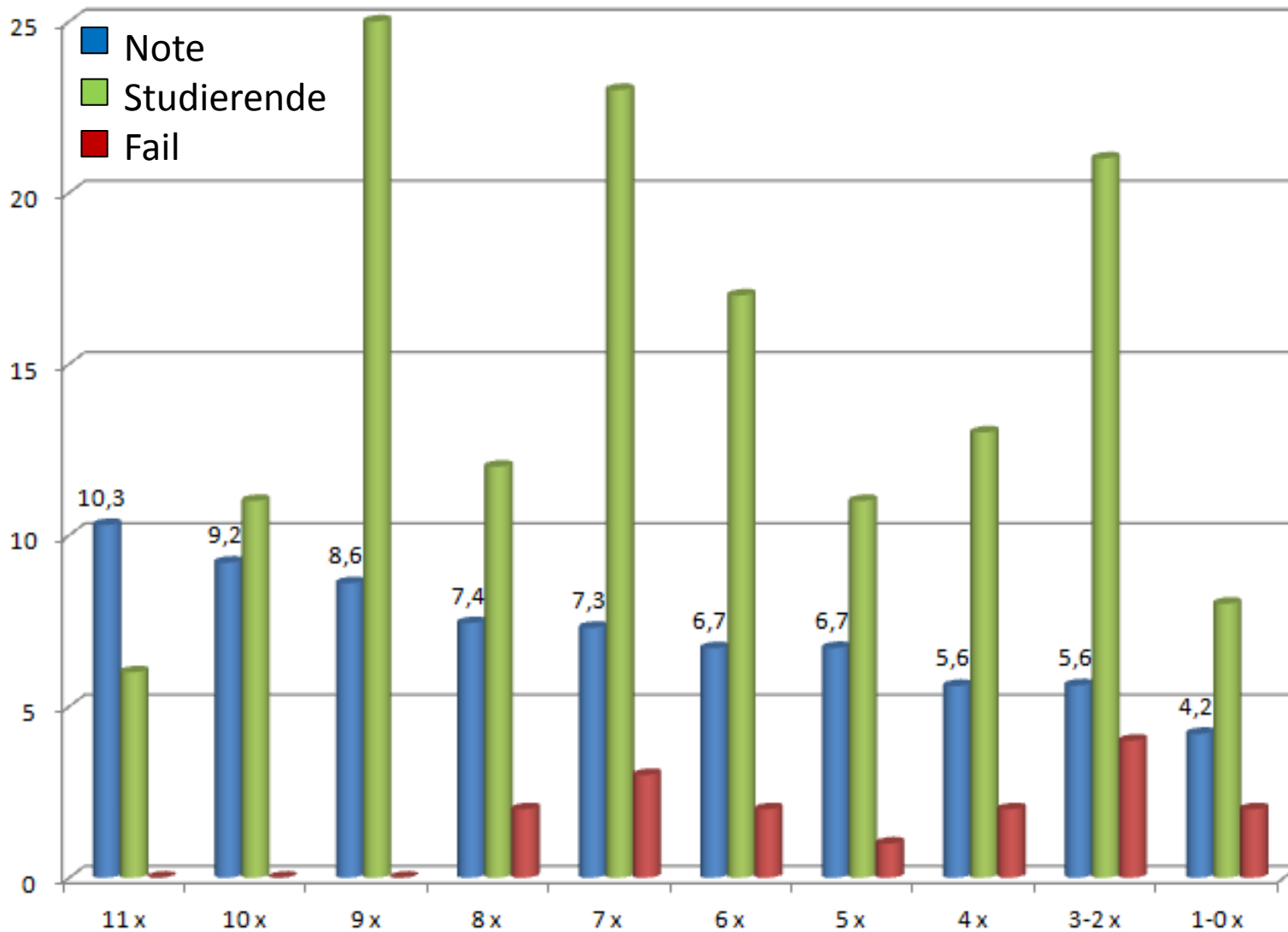


- bessere Klausurergebnisse
- besseres Detailwissen
- höhere Nachhaltigkeit

- mehr Stoff
- mehr Detailwissen
- „Kalkulierbarkeit“ des Wissens



Klausurergebnisse



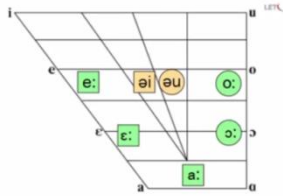
History of English

- WS 14/15
- n = 152 von 172

Detailwissen

Stage 1:

the raising and diphthongization of /i:/ and /u:/



[i:]: advised, high, exercise



John Hart
English Pronunciation Dictionary, 1570

The Great Vowel Shift

Read the following passage (Shakespeare's "The Taming of the Shrew") and associate the vowels with the stages of the Great Vowel Shift wherever possible:

- ACT II
SCENE I. Padua. A room in BAPTISTA'S house.
(the video shows the scene in PDE)

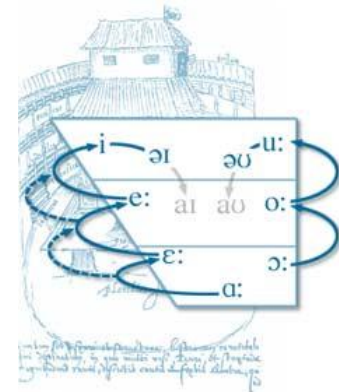
Enter KATHARINA and BIANCA

BIANCA Good sister, wrong me not, nor wrong yourself,
To make a bondmaid and a slave of me;
That I disdain: but for these other gawds,
Unbind my hands, I'll pull them off myself,
Yea, all my raiment, to my petticoat;
Or what you will command me will I do.



History of English

- WS 14/15
- n = 152 von 172



Unit 9: The Great Vowel Shift

Testformat (E-Klausur): Selection Task

GVS effects and other phonological properties of EMnE

Good sister, wrong me not, nor wrong yourself, to
make a **bondmaid** and a slave of **me**.

Mark all words that exhibit GVS effects !

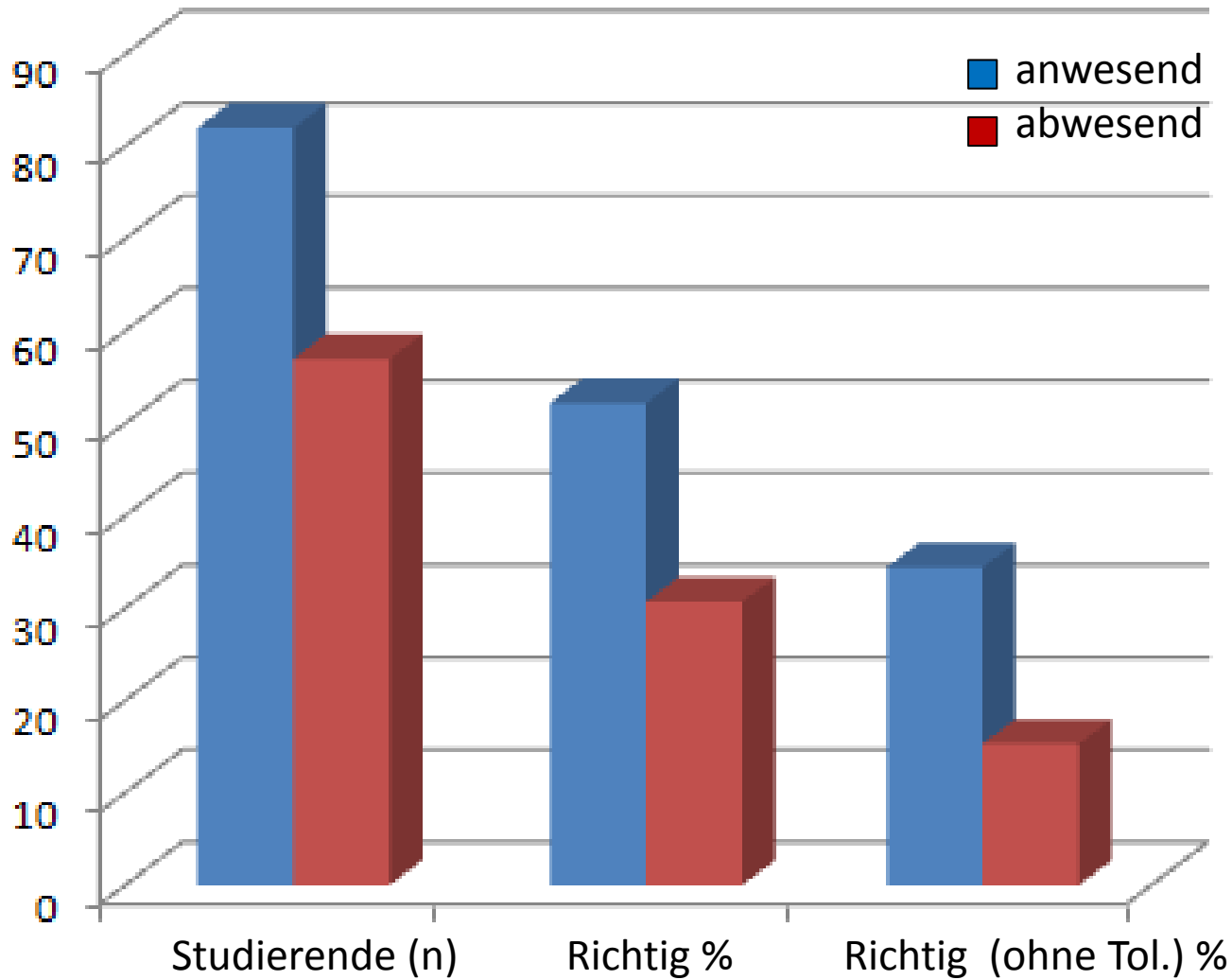
Total No. of Passages: 25
Passage No.: 3
Name: jh

This exercise does not involve
any time limit.

- Mark all words that exhibit monophthongal 'o' in: I WILL WIS ... IO.
- Mark all words that were affected by GVS stage 1 in: THOU LIEST ...
- Mark all words that exhibit GVS effects in: GOOD SISTE ... AVE OF ME.
- Mark all words that were affected by GVS stage 3 in: I KNEW NOT ... ?
- Mark all words that exhibit post-vocalic 'R' in: MADAM, THE ... UP.
- Mark all words that were affected by GVS stage 2 in: THY WIT IS ...
- Mark all words that exhibit GVS effects in: I 'LL PLEA ... HAVE HIM.

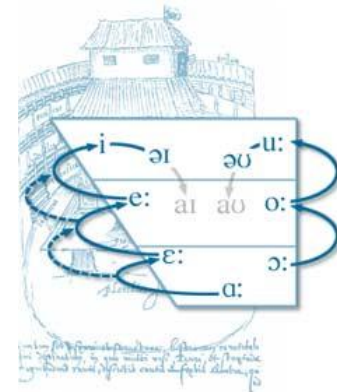
Help
Submit

Detailwissen



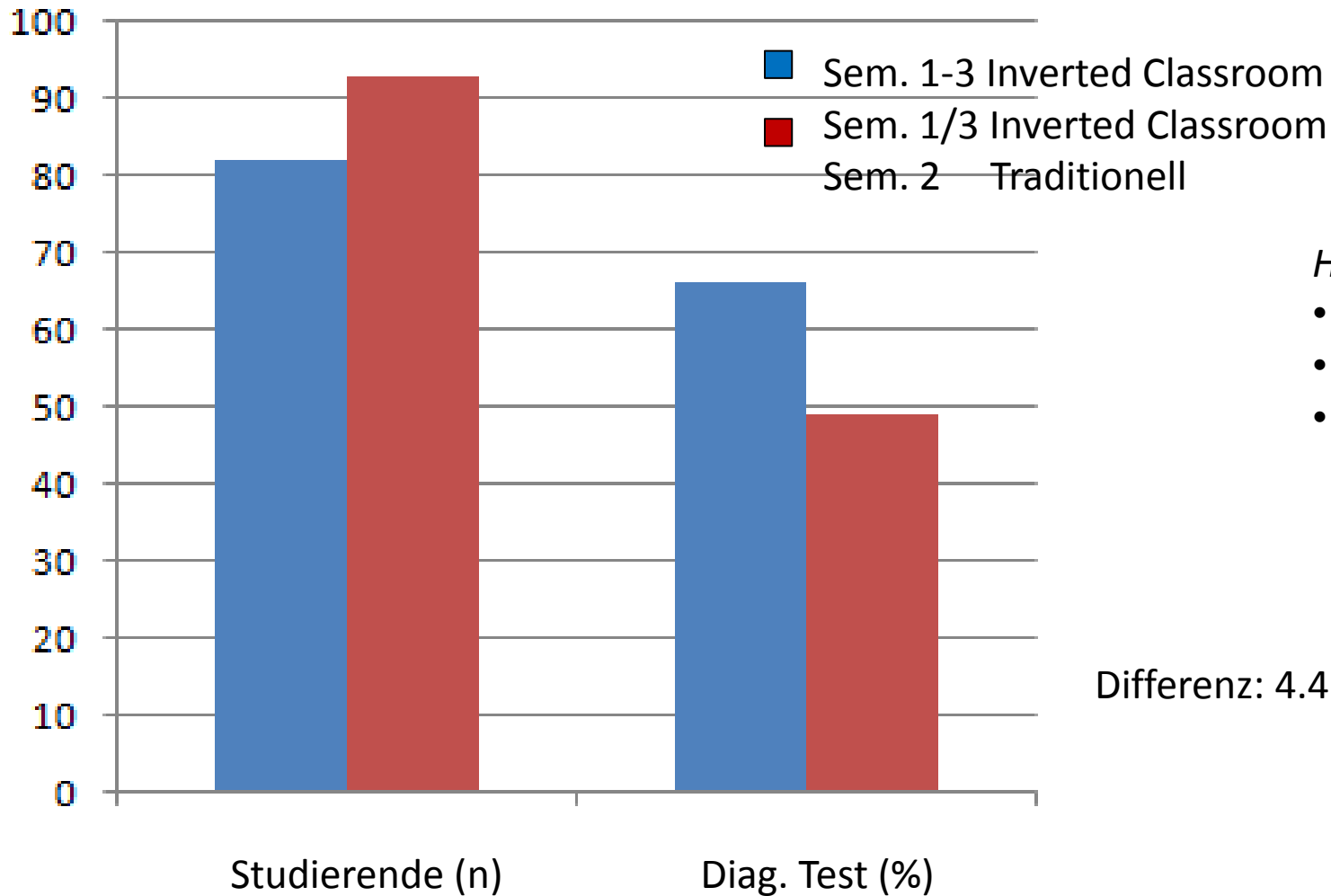
History of English

- WS 14/15
- n = 152 von 172



Unit 9:
The Great
Vowel Shift

Nachhaltigkeit



History of English

- WS 14/15
- n = 175
- 120 Fragen zu Sem. 2

Differenz: 4.4 Notenpunkte

Was ist zu tun?



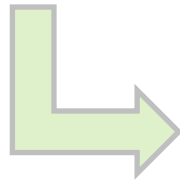
Lehrende

- Anleiten
- Individual-Coaching
- neue Rolle erlernen
- ‚Ängste‘ nehmen



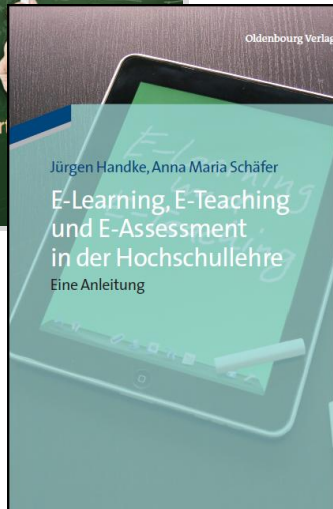
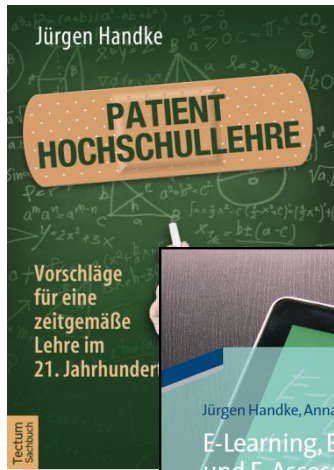
Studierende

- Eigenverantwortlichkeit
- Präsenzphase schätzen
- mehr Medienkompetenz



- Information
- Kommunikation





GMW 15
Gesellschaft für Medien
in der Wissenschaft e. V.



Shift Learning Activities

vom Inverted Classroom Mastery Model zum xMOOC

4. Sept. 2015, München, J. Handke

handke@uni-marburg.de